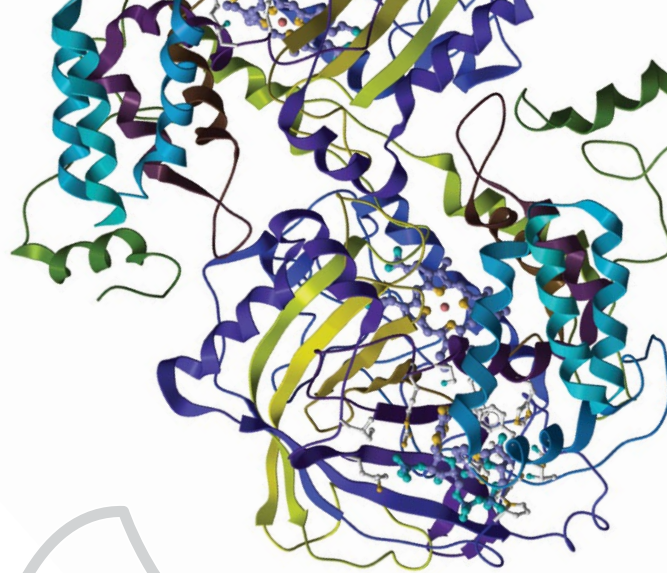


# Reichert2SPR

The best 2-channel SPR  
value on the market



## An SPR leader since 1997

Reichert® is a name you can trust. We've been working with SPR technology since 1997, selling to some of the top names in academics and private industry. We've been in business for more than 140 years, and are now part of AMETEK® Ultra Precision Technologies, a division of AMETEK Inc., which is a leading global manufacturer of electronic instruments and electromechanical devices. With Reichert, you'll get personal service and attention, including:

- A product demo in your lab
- In-person set-up and training
- Ongoing support and troubleshooting

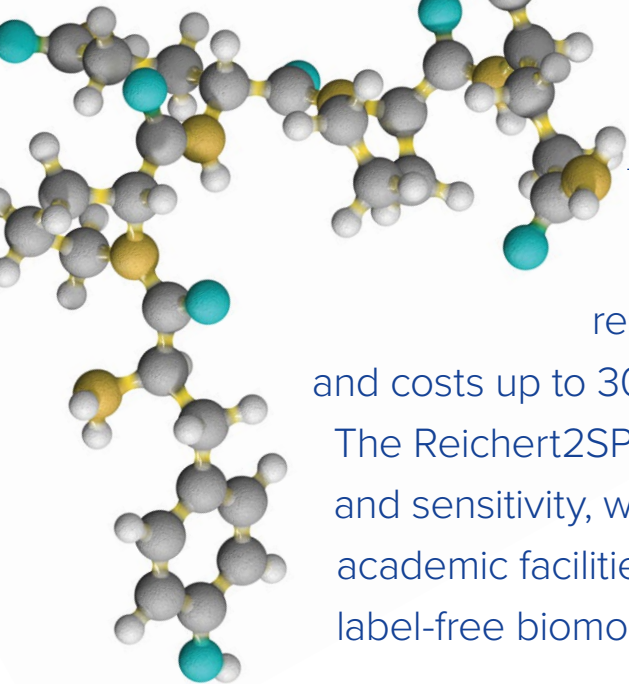


## About SPR

Surface plasmon resonance (SPR) is a technique that lets you investigate biomolecular interactions in real-time. With SPR, you can:

- Quickly determine if there is a biomolecular interaction with your protein or other target molecule
- Answer questions about the binding properties including:
  - How fast do the molecules associate and dissociate?
  - How strong is the interaction (affinity)?
  - How specific is it?
- Study a variety of interactions including, but not limited to, protein-protein binding and protein-small molecule binding
- Perform SPR on crude samples (using Reichert's accessible tubing)
- Work with native proteins (SPR is a label-free technique that lets you save time)
- Get more data with greater accuracy compared to other techniques





Choose the 2-channel surface plasmon resonance (SPR) system that lets you do more — and costs up to 30% less than the leading competitor.

The Reichert2SPR System pushes the limits of detection and sensitivity, which is why it's used by leading universities, academic facilities and biotech startups around the world for label-free biomolecular interaction analysis.

### With Reichert, you get more, including:

- High-quality, publication-ready data
- The most sensitive, flexible and affordable 2-channel system available
- The best performance-to-cost ratio for individual labs
- A proven SPR leader since 1997

To see how Reichert can help advance your research and lead to new breakthroughs, contact us today to schedule a demo in your lab.

### Save Up To 30% With Reichert — The Affordable Choice

Spend less money on equipment and maintenance — and more on your research — when you choose Reichert. In fact, the typical research lab can save approximately \$17,000 per year, per system, compared to the leading competitor. That's \$85,000 over the next five years — valuable funds that you can use for your staff and other critical research needs.

### LOWER OPERATING COSTS

A typical lab can use 75–200 sensor chips each year, which is why you should always ask about the cost of chips when you're considering an SPR system. At Reichert, our high-quality chips are often less than half the price of our competitors, so you can run more experiments without worrying about out-of-control costs.

### NO COSTLY SERVICE CONTRACT REQUIRED

Other SPR companies make you purchase a service contract, which can easily cost up to \$150,000 over the course of five years. With the Reichert2SPR System, all of the typical parts that need maintenance are easy for you to access (and service) yourself. Of course, we do offer service contracts, if you would rather let us handle the regular maintenance.



**SAVE  
\$85k  
OVER 5 YEARS**

## Open System = High-Quality Data, More Flexibility

### GET HIGH-QUALITY, PUBLICATION-READY DATA

The Reichert2SPR System offers significant advantages for researchers and scientists. Whether you're working with simple solutions or more challenging assays, you can count on Reichert to offer:

- High sensitivity — study protein interactions with low molecular weight (down to approximately 100Da) compounds
- High quality kinetic analysis
- Affinity measurements for weak or strong interactions (ranging from 1 mM to 1 pM)
- Precise determination of thermodynamic parameters
- Accurate concentration analysis
- Industry-leading low drift (0.1  $\mu$ RIU/min)
- Extremely low noise (0.05  $\mu$ RIU rms)
- Faster baseline stability — the Reichert2SPR System stabilizes 2x-3x faster than the competition, due to our streamlined fluidics
- High sample capacity (up to 768 samples per run)

### OPEN SYSTEM = MORE CONTROL, MORE FLEXIBILITY, MORE TIME FOR RESEARCH

Other SPR systems only allow for limited access to critical parts. But with Reichert, everything you need to access is right out in the open, which makes your life — and your research — much easier.

#### EASY TO CHANGE AS YOUR RESEARCH EVOLVES

The Reichert2SPR System is designed to be as flexible as possible, from changeable tubes to an easily accessible flow cell — without costly upgrades and changes.

#### 5-MINUTE TUBING CHANGES

With Reichert, you can change the tubing whenever you want in just minutes — without having to wait around for a service call. All Reichert SPR systems are designed to use low-cost, off-the-shelf HPLC fittings and tubing that are easily accessible to you and your staff. With Reichert, you can:

- Change the tubing to different sizes
- Accommodate a wide range of sample compositions (from pure soluble solutions to cell lysates) with varying viscosities



- Run crude samples without having to purify them — saving you time and providing even greater flexibility — without risking costly delays and service calls; crude samples include:

- Whole cells
- Viruses
- Lysates
- Serum
- Aggregates

- Stop worrying about clogs — if a tube is damaged, blocked or clogged, you can replace it yourself in just a few minutes, using standard tubing



#### EASY-TO-CLEAN FLOW CELLS

While some competitors charge nearly \$10,000 to replace a flow cell cartridge, our flow cells are easy to clean (and, if necessary, change) yourself. We offer standard and specialized flow cells; please see [www.reichertspr.com](http://www.reichertspr.com) for a complete list.



#### A WIDE VARIETY OF STANDARD AND SPECIALIZED CHIPS

Our sensor chips are equivalent to the leading competitor's chips, at a significantly lower cost. Reichert offers all standard chips; specialized sensor chips are also available. Please see [www.reichertspr.com](http://www.reichertspr.com) for a complete list.



#### INTERFACE WITH OTHER MODULES FOR ALL-IN-ONE EXPERIMENTATION OPTIONS

Reichert's open, component-based design lets you connect the Reichert2SPR System to other modules, and gain valuable new information in a single experiment.

Our specialized flow cells let you combine Reichert SPR with electrochemistry, fluorescence or photochemistry; you can also couple Reichert SPR with mass spectrometry or liquid chromatography.

## Automatic or Semi-Automated Systems To Meet Research and Budget Needs

### CHOOSE AN AUTOMATIC OR SEMI-AUTOMATIC SYSTEM

The Reichert2SPR System is a two-channel system, which means you can use one channel as a reference while immobilizing your ligand or target on the other. Our two-channel system is available in two configurations:

#### AUTOMATIC — FOR 24 HOURS OR MORE OF UNATTENDED ANALYSIS

- Autosampler injects your samples while you do other work or leave the lab
- Maximizes the performance and throughput

#### SEMI-AUTOMATIC — A MORE COST-EFFECTIVE CHOICE

- You or your staff manually inject samples (ideal when working with a limited sample set)
- Perfect for training students and staff on injection techniques
- Upgradable at any time

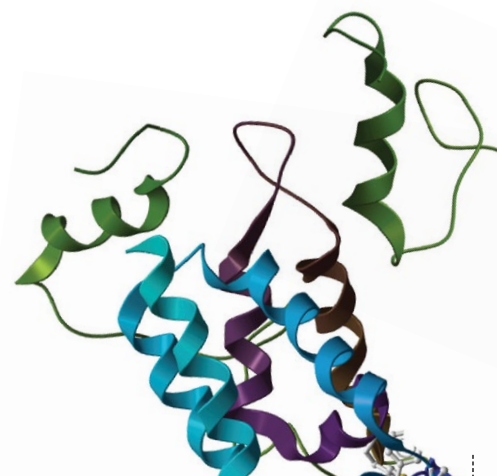
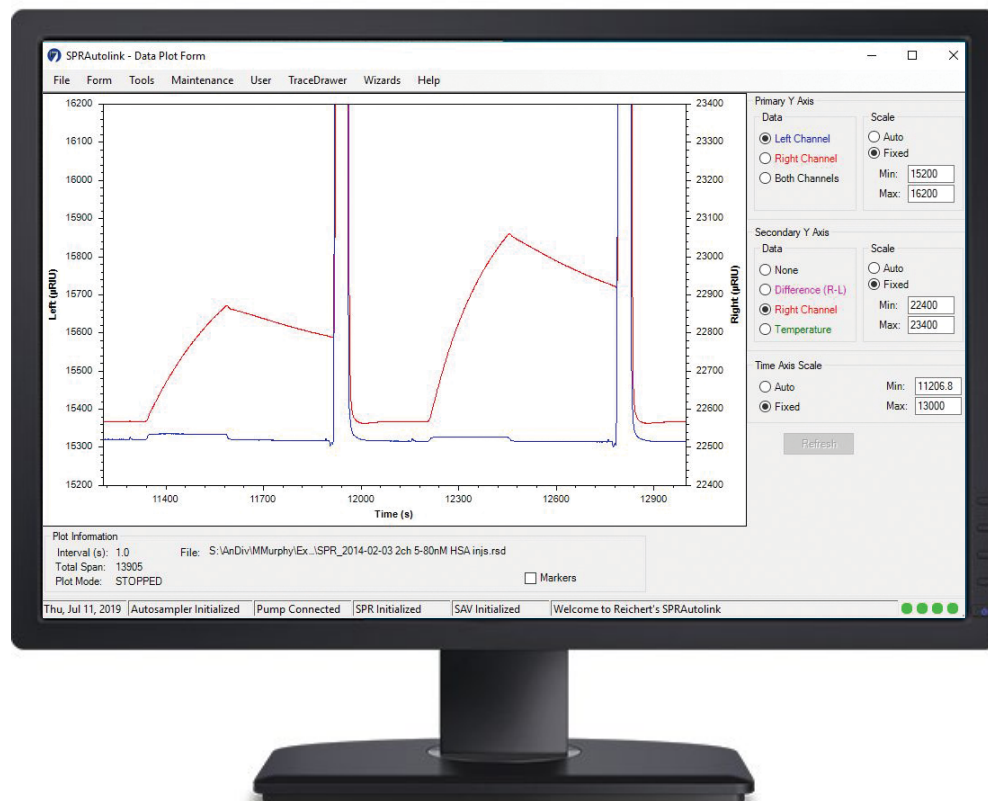
Need more channels? Please see our website for details about our 4-channel instrument.

## USER-FRIENDLY SOFTWARE LETS YOU GET WORK DONE FASTER

Streamline your workflow with our powerful yet easy-to-use software. The simple drag-and-drop interface lets you quickly develop and execute experiments, including couple and capture experiments.

The Autolink software controls and analysis package features:

- 21 CFR part 11 controls
- Flexible, drag-and-drop experiment setup
- Streamlined data acquisition and analysis
- Flexible data analysis with multiple binding models
- Access controls to ensure data integrity
- Configurable authorization levels for creating and running experiments, options and data export



## Specifications

### TECHNICAL INFORMATION

Sample Loading	Autosampler or semi-automatic injector, standard HPLC tubing and connectors, external syringe pump
Sample Capacity	Any combination of up to 2 trays can be used. Choose: 12 (10 mL) or 48 (2 mL) vials; or 96-well (high or low) or 384-well plates
Sample Storage	4°C or ambient temperature
Sample Volume	20-4500 µL (depends on installed loop volume)
Temperature Range	10°C below ambient to 70°C

### MEASUREMENT SENSITIVITY

Refractive Index Range	1.33 to 1.40 (@780nm)
Analyte Concentration Range	1 mM to 1 pM
Minimum Molecular Weight Detection	< 100 Daltons
Baseline Noise	0.1 µRIU peak-to-peak, 0.05 µRIU RMS, @ 25 µL/min
Baseline Drift	< 0.1 µRIU/min

### TYPICAL KINETIC AND EQUILIBRIUM CONSTANT RANGES

Association Rate Constant	$10^3$ to $10^7$ M <sup>-1</sup> s <sup>-1</sup>
Dissociation Rate Constant	$10^{-1}$ to $10^{-5}$ s <sup>-1</sup>
Equilibrium Dissociation Constant	0.1 mM to 1 pM

**See for yourself how the Reichert2SPR System can help you make new discoveries. Contact us today to set up a hands-on demonstration in your lab.**



#### Corporate Office

Reichert Technologies  
3362 Walden Avenue, Suite 100  
Buffalo, New York 14043, USA  
Tel: +1 716-686-4500  
Fax: +1 716-686-4555  
Toll Free USA: 1-888-849-8955  
reichertspr.lifesciences@ametech.com

#### European Service Center

Carl-von-Linde Str. 42-85716  
Unterschleissheim/  
Munich, Germany  
Tel: +49 89 315 8911 0  
Fax: +49 89 315 891

[www.reichertspr.com](http://www.reichertspr.com)