

## Analysis of triglycerides using reversed-phase LC

Triglyceride was analyzed by using the silica C18 column Finepak SIL C18S with two different eluent conditions. In No.1 condition, as shown Fig.1-1, four components including tristearin were eluted. However, in No.2 condition, tristearin was not eluted as shown in Fig.2-1. Fig.1-2 and Fig.2-2 shows that triglyceride of fatty acid with short carbon chain was detected in rapeseed oil.

### Conditions:

Pump:	PU-980
Detector :	830-R1
Sensitivity :	$8 \times 10^{-5}$ RIUFS
Column :	Finepak SIL C18S
Eluent :	No.1 $\text{CHCl}_3 / \text{CH}_3\text{CN}$ (30/70) No.2 $\text{CHCl}_3 / \text{CH}_3\text{CN}$ (28/72)
Flow rate :	1.0ml/min
Sample :	1. Trilaurin 2. Trimyristin 3. Tripalmitin 4. Tristearin Rapeseed oil

Fig.1-1 Standard sample in No.1 condition

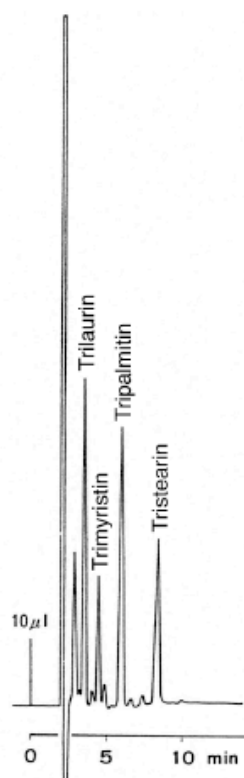


Fig.1-2 Rapeseed oil

