



# Disintegration Tester DISI



- **Automatic acquisition of tablet thickness**
- **Precise measurement in IPC/QC environment**
- **Fast, easy and problem free cleaning**
- **German invention – German quality**

## DISI – Innovative concept and proven design

The new DISI Disintegration Tester is a fully automated measuring system which combines an innovative concept with a proven design. The baskets are completely protected against any corrosion plus the transfer of the signal is contact free.

With every basket upstroke the measurement results are acquired then stored in the PH21 Software and displayed graphically. The software is compliant to 21 CFR Part 11 regulations.

Corrosion problems are eliminated due to the sealed baskets. Each basket has its own driving mechanism, and can therefore be tested individually. The baskets are equipped with a sensor enabling continuous control of the bath temperature. The baskets can be disassembled within seconds for cleaning.

PH21 software completes the DISI Tester thus making it a fully automatic system. This allows you to automate the daily work and guarantees security of the data is maintained according to 21 CFR Part 11.

The DISI tablet disintegration tester is available in different versions as follows: with one basket (DISI 1), with two (DISI 2), three (DISI 3) and four baskets (DISI 4).

The DISI is a reliable, long lasting and high quality product.





### System operation

The DISI is operated through the Windows PC Software PH21. For data security reasons we recommend using Windows XP or 7Pro with SQL server database.

### Measurement principle

During the disintegration test tablet thickness is continuously monitored and data is transmitted to the PH21 Software. The test data is displayed graphically and updated with every measurement upstroke.

### Lift mechanism

The baskets are moved up and down by a stepper motor driven by linear driving mechanism. This solution provides excellent repeatability and linearity of the speed.

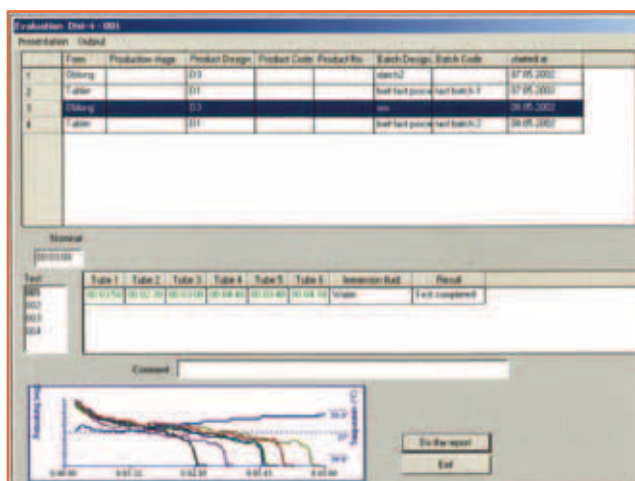
### Temperature control

In addition to the precise temperature control of the heater module, every basket has its own temperature sensor. This allows continuous monitoring of the temperature solution which, consecutively, will be transferred and displayed together with the disintegration data.



### Data evaluation

The data evaluation is based on the proven PH21 concept. Every tablet can be traced back via the batch ID number at any time. Statistical reports can be obtained in tabular and/or graphical format.





## Key Features

- \* Automatic measurement of tablet disintegration time and continuous acquisition with each basket upstroke
- \* Guaranteed sealed baskets without any cables and open electrical contacts
- \* Maintenance free signal transfer
- \* No tools required to disassemble the baskets
- \* Basket removal tool, which allows the operator to remove the basket without getting wet hands
- \* Self centering baskets – due to hidden magnets
- \* Individual basket lift mechanism, in order to test every basket independently
- \* Control and data evaluation by means of the PH21, the most successful tablet testing software on the market
- \* Possibility to combine the DISI and other testers working under PH21 software
- \* Electronic calibration and verification including protocol
- \* PH21 Software provides a complete audit trail
- \* 21 CFR Part 11 compliant software

## Calibration, Verification

- \* The DISI provides a simple and fully automated calibration routine. All calibrations are performed electronically.



*Contact for information and ordering:*

**ABL&E-JASCO Polska SP. z o.o.**  
ul. Wadowicka 12, 30-415 Kraków  
Tel/Fax: 012-267 7187, E-mail: [ablepol@ablelab.com](mailto:ablepol@ablelab.com)  
[www.ablelab.com](http://www.ablelab.com)